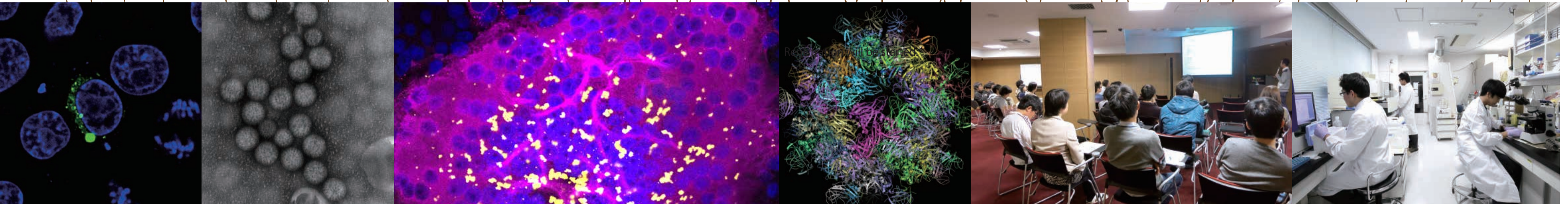
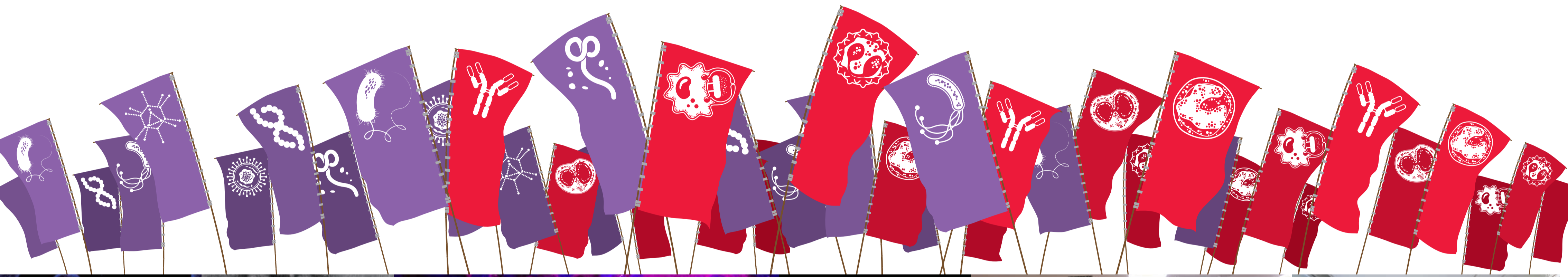


# 病原体 VS 免疫系

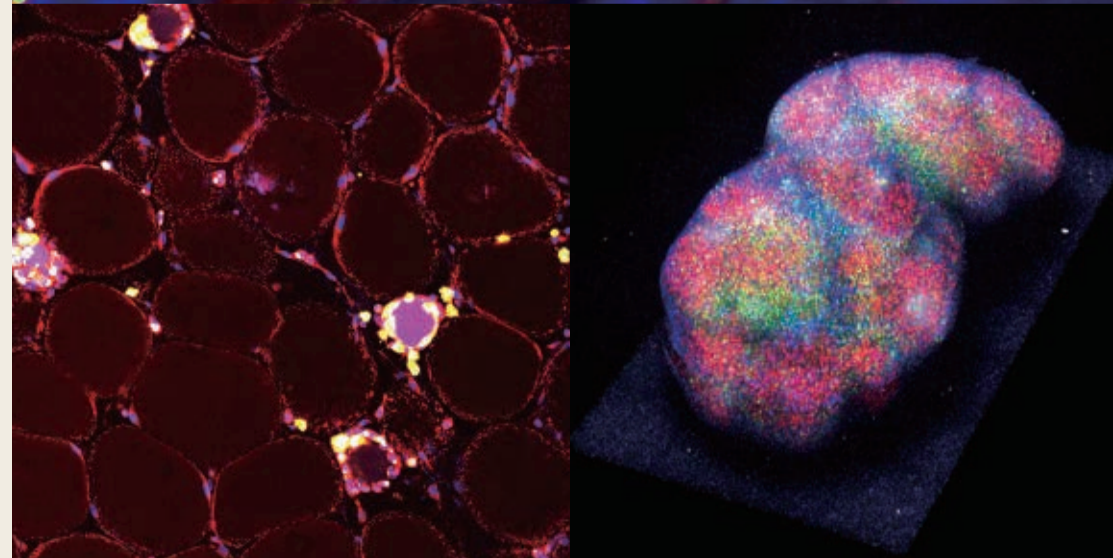
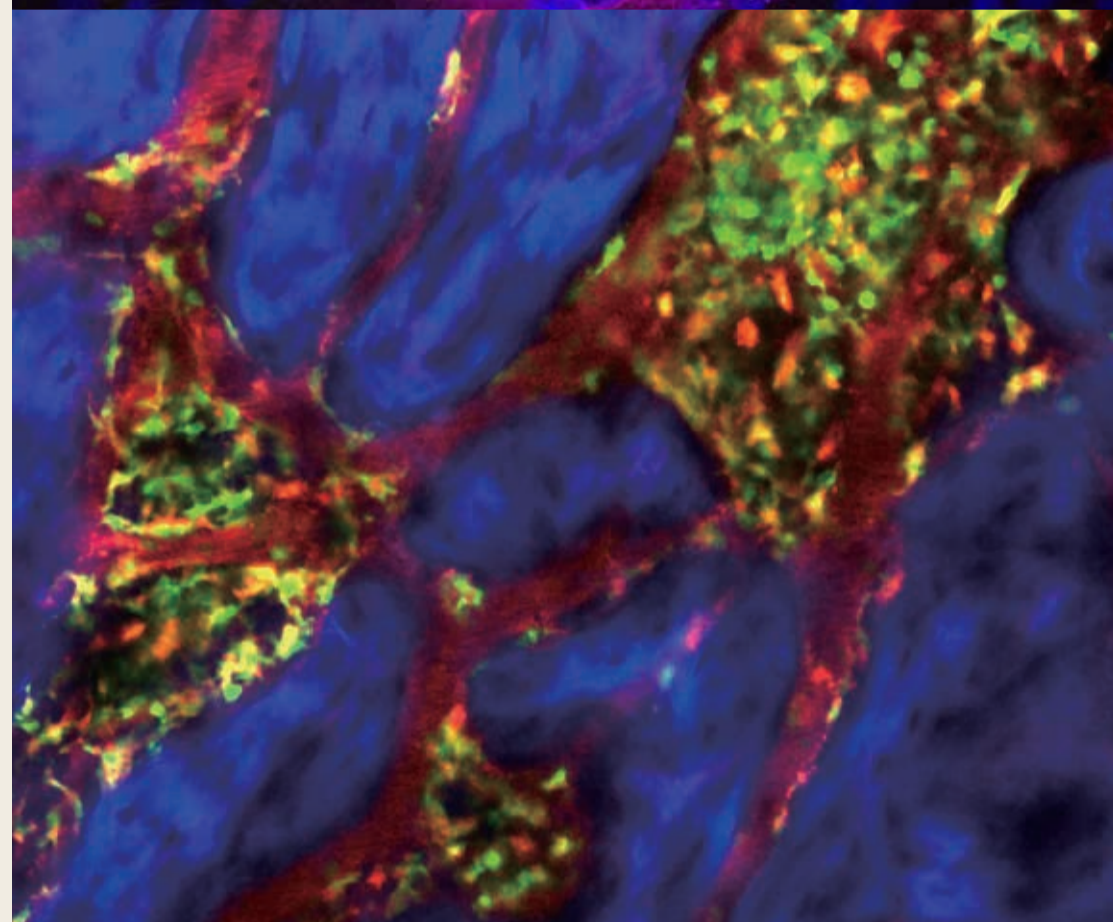
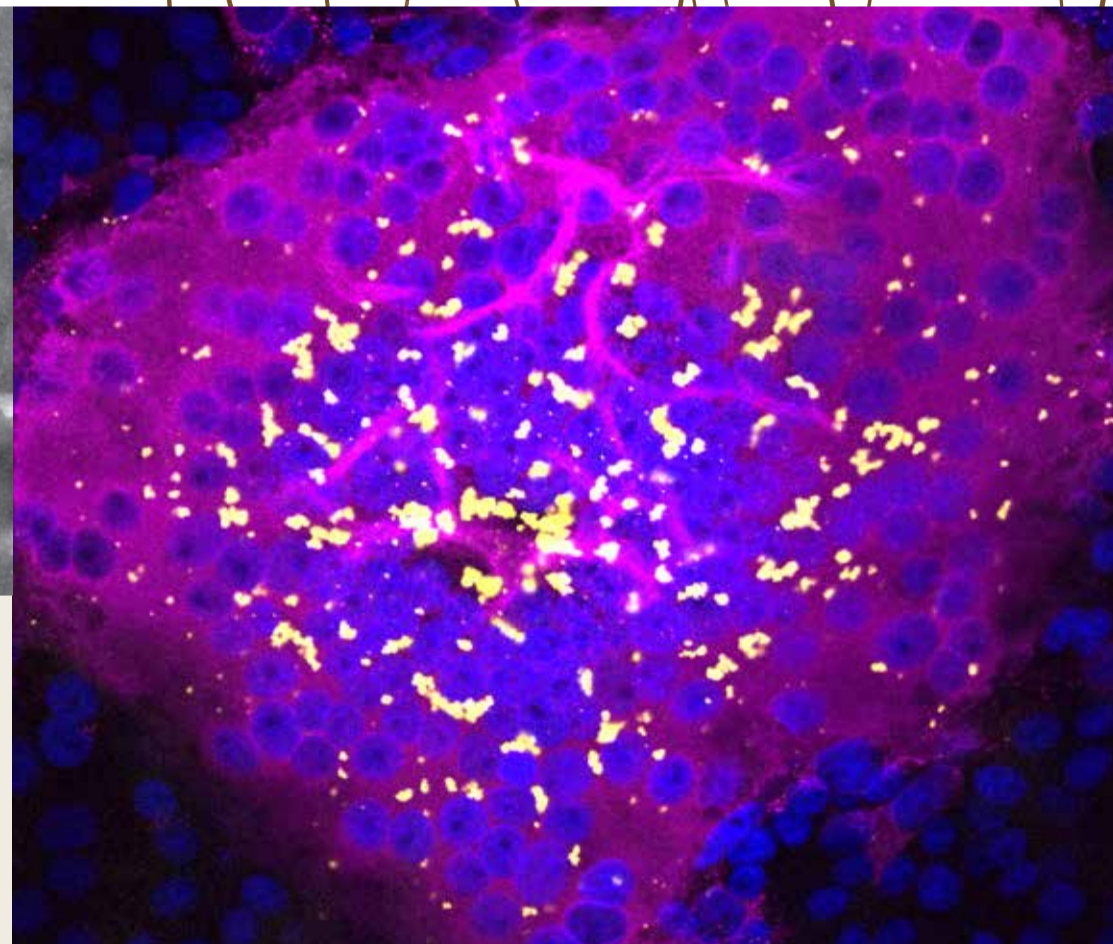
Microbes  
Immunity



Pathogens invade into our bodies and develop pathological conditions as if they are familiar with our body system. On the other hand, we have developed the immune system to counter against the infection of pathogens. The correlation between pathogens and the immune system represents a history of the long-term battle.

To overcome the infectious diseases, it is essential to understand the both mechanisms of pathogen infection and our immune response.

Measures against infectious diseases including pandemic influenza, AIDS and Ebola fever threatening the whole world, have become an urgent matter beyond national borders in recent years of globalization advanced. This program aims to train researchers who can respond to such situations.



## Training researchers being an expert in both infectious disease and immunology

In this subprogram, we will make use of resources in Research Institute for Microbial Diseases, Immunology Frontier Research Center, and Graduate School of Medicine to provide training sessions for development of such researchers.



## Understanding the universal laws of biological phenomena through the studies of infectious disease and immunity

Top researchers in the fields of infectious diseases and immunology will give lectures on basic concepts of the field and discussion sessions on important recent papers in related fields. These sessions will be instrumental for development of leading researchers both in infectious diseases and immunology.



Photos/Dept. of Molecular Virology, Virology and Immunoparasitology in RIMD  
Immunology and Cell Biology and Immune Response Dynamics in IFREC

### Qualification

graduate students in doctor course  
*\*Two-year attendance is necessary to complete this program*

### Combined Program on Microbiology and Immunology

Top researchers in the fields of infectious diseases and immunology will give (1) Lectures on basic concepts of the field and (2) Discussion sessions on important recent papers in related fields. Basically, it starts every Tuesday 10:30am-, at BIKEN hall

Schedule Details 2024

### Credits

10 credits for two years

Registration will be started from April 8- April 17, 2024  
Program registration process:  
1.KOAN Both Courses and Program registration needed  
URL: <https://koan.osaka-u.ac.jp/>  
2.For contact information  
E-Mail or registration form →QR cord



### Advanced Program

The researchers invited from other institute will give the seminars on the current expertise in the field of immunology and microbiology. Basically, it is held once a month 4:00pm-, at Taniguchi memorial hall

Schedule Details 2024

The Guidance will be held on Tuesday, April 9, 2024, 10:30-11:00 am at BIKEN Hall, Main Bldg 1F, Research institute for Microbial Diseases (Suita Campus)